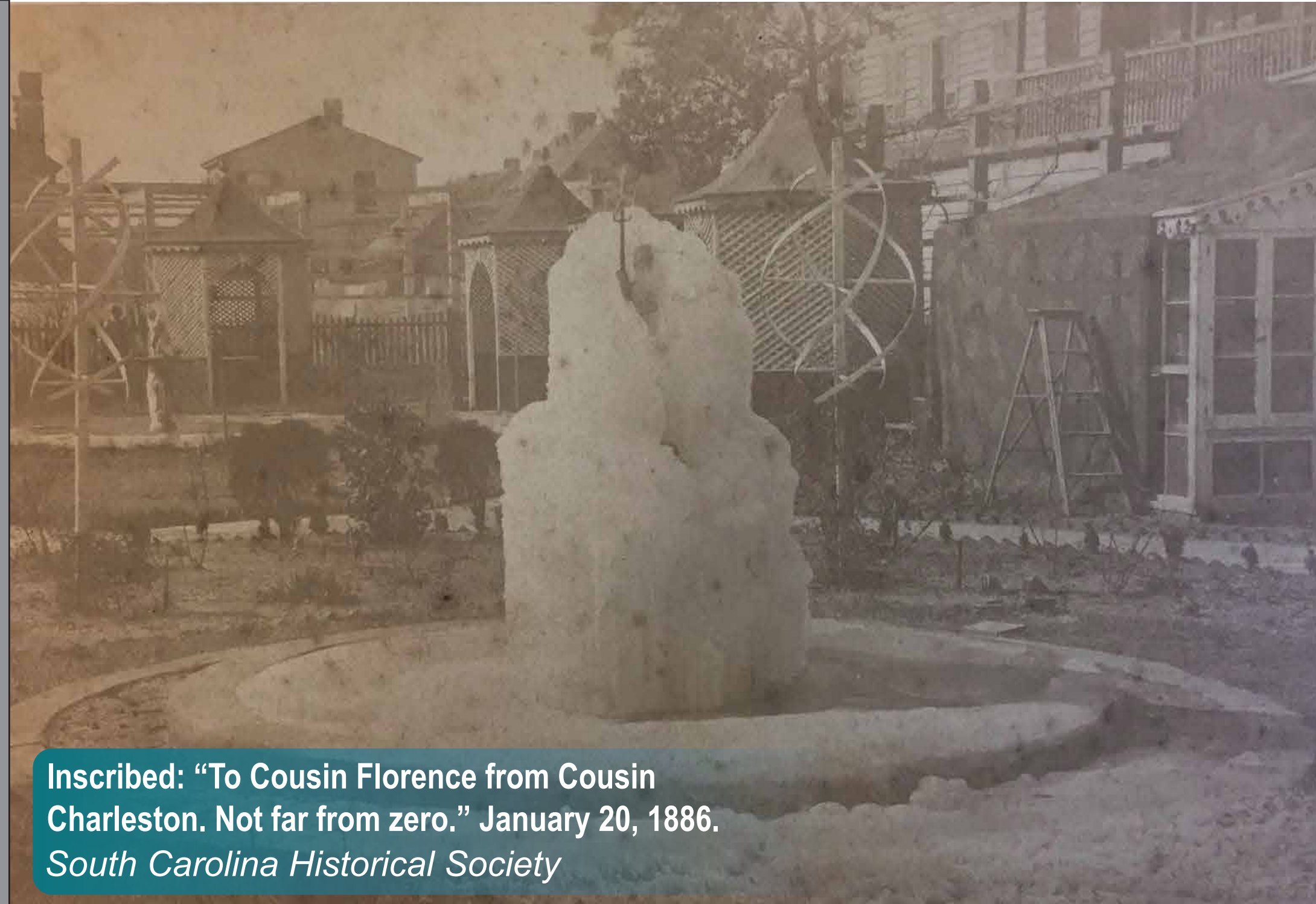
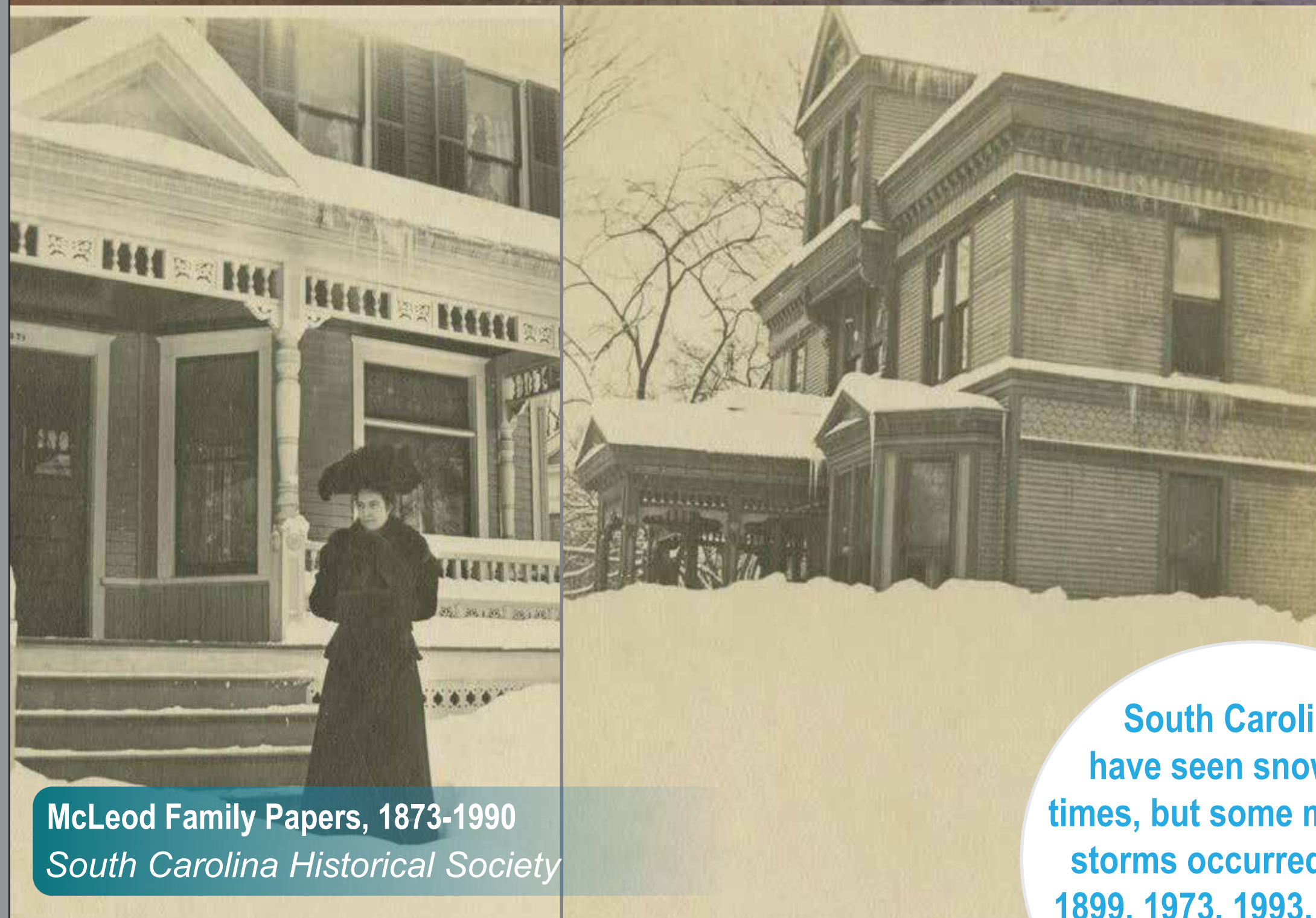


# DRIZZLE



Inscribed: "To Cousin Florence from Cousin Charleston. Not far from zero." January 20, 1886. South Carolina Historical Society



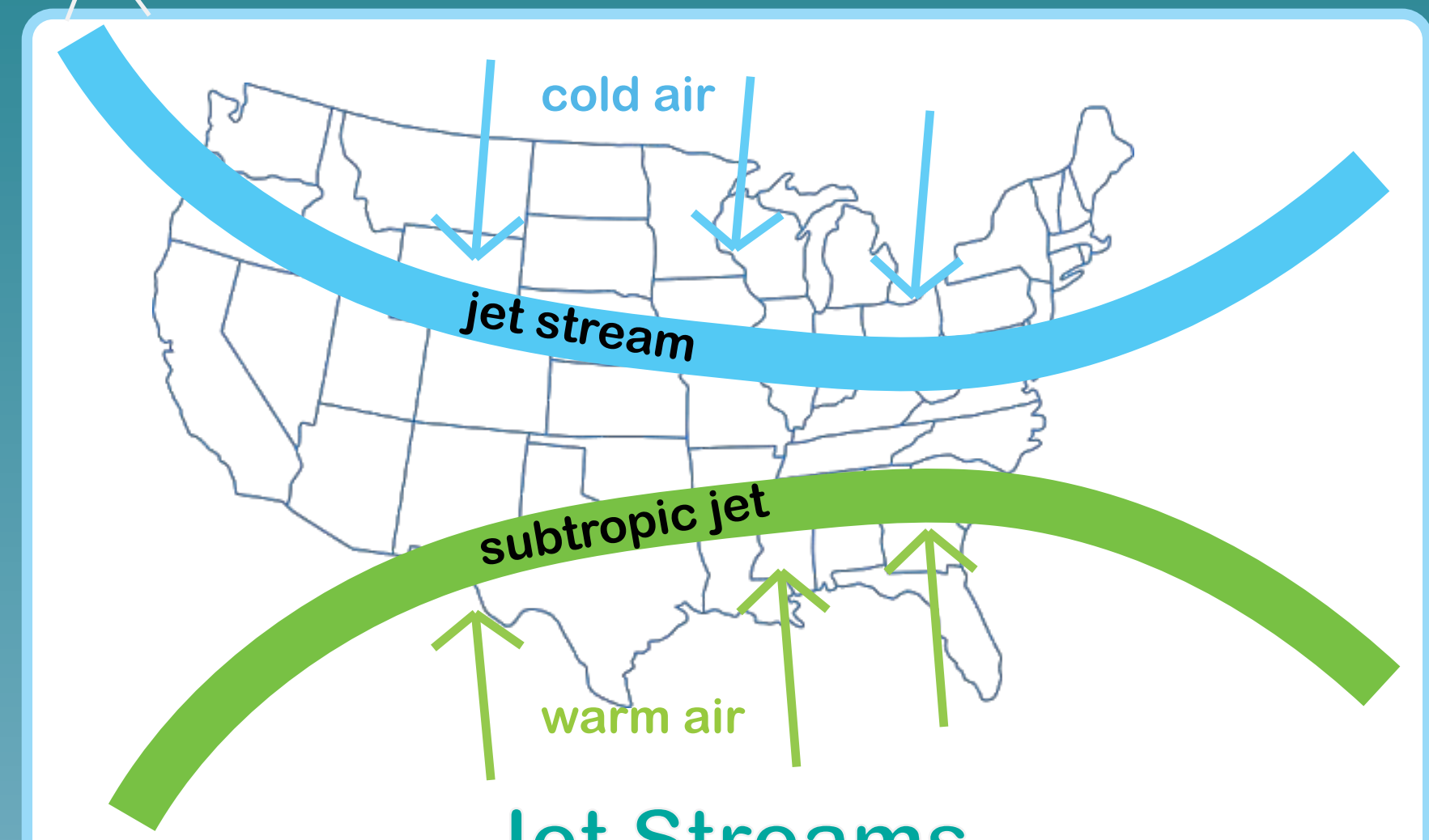
McLeod Family Papers, 1873-1990 South Carolina Historical Society



Snow in White Point Garden, year unknown. South Carolina Historical Society



Does it ever snow in South Carolina?  
I want to build a snowman!

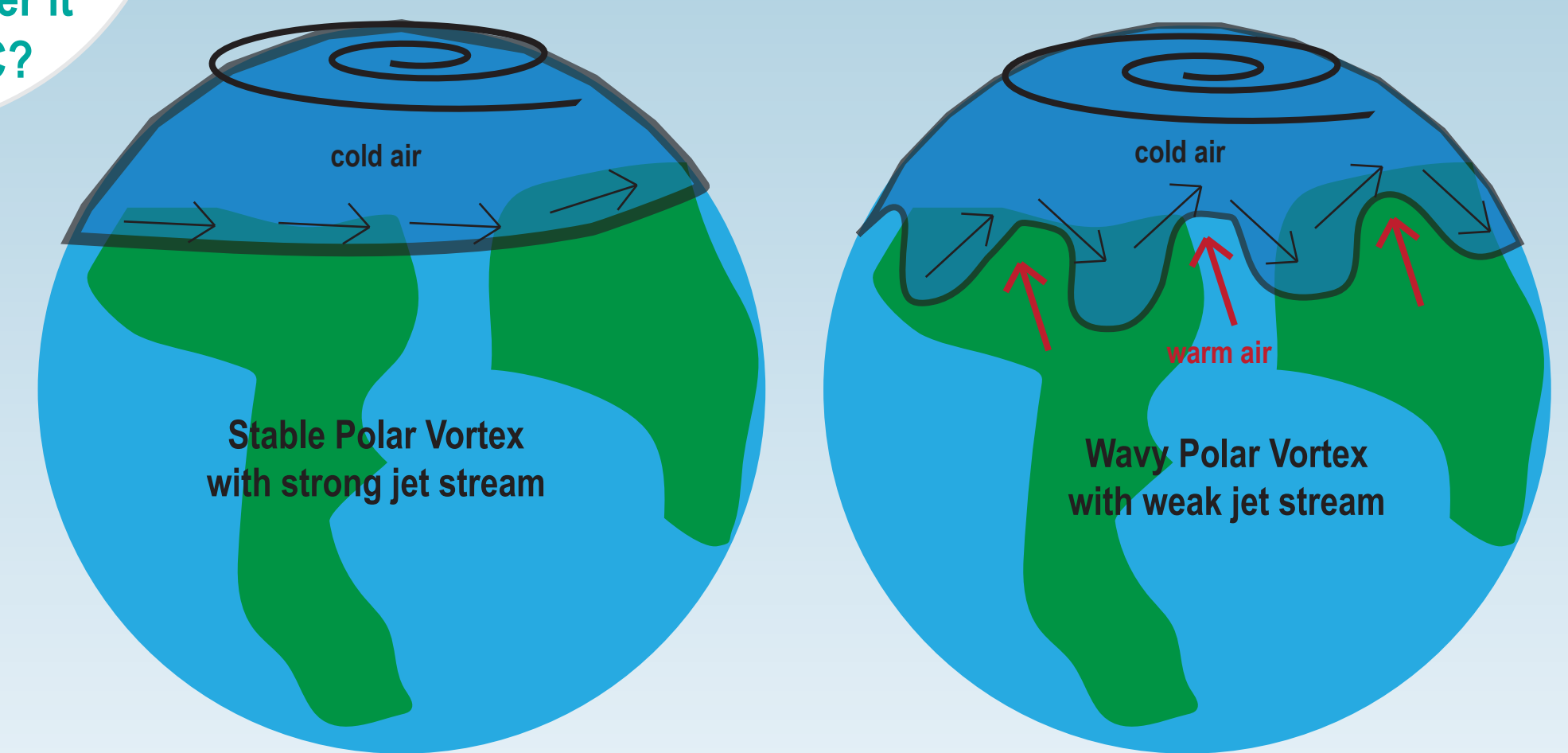


**Jet Streams**  
The sun does not heat the earth evenly, and when cold air masses meet warm air, a jet stream forms. This stream can move as fast as 250 mph and changes routes depending on earth's air and surface temperature. These streams make the northern U.S. typically cooler and the southern U.S. typically warmer.

**Salty Roads!** Many cities use trucks to put salt on snowy and icy roads. Salt melts ice because it lowers the freezing point of water! However, the colder the weather, the more salt you need. Many cold regions put sand on roads to create friction for cars rather than trying to melt ice.

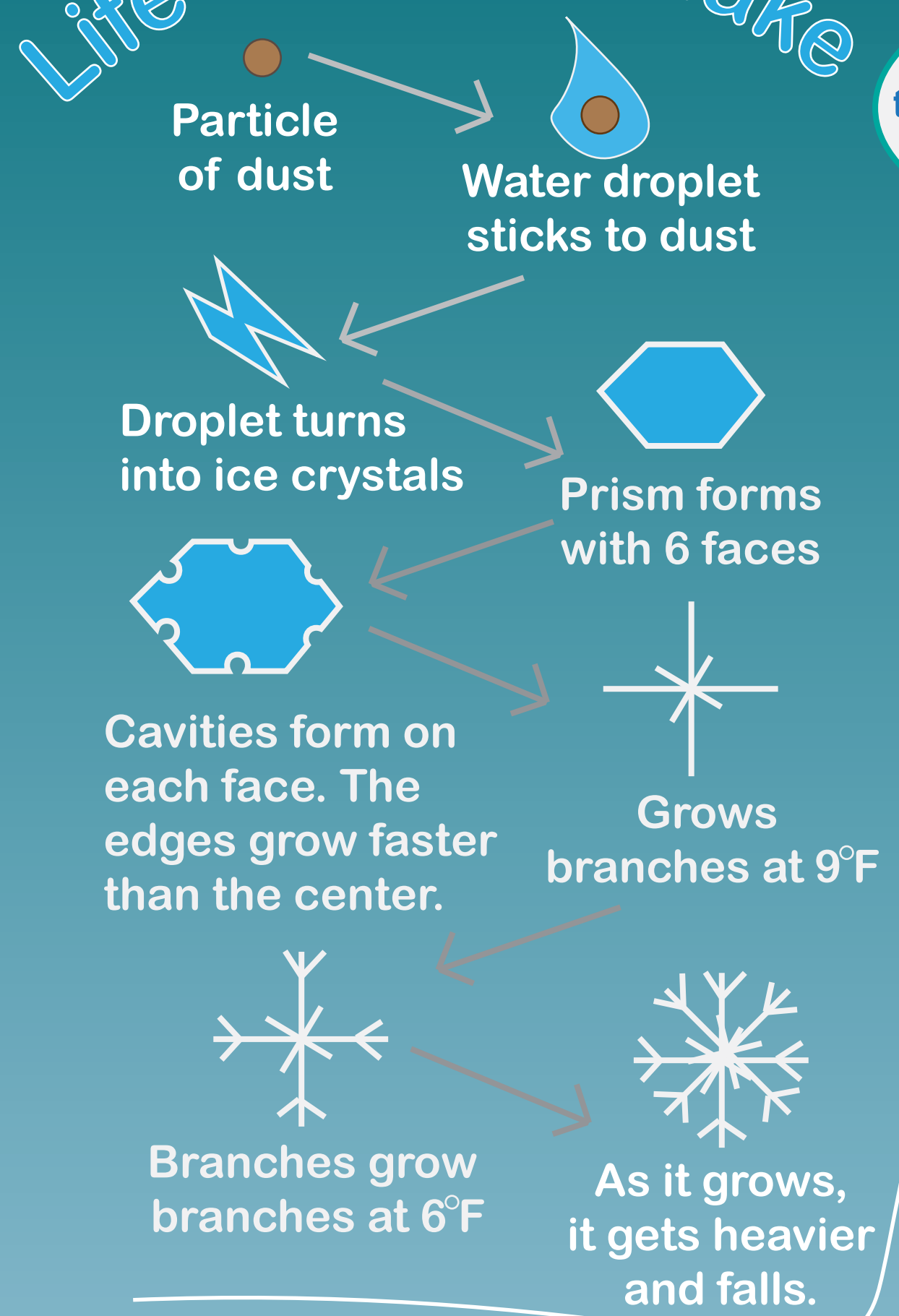
## Polar Vortex

The Polar Vortex is an area of low pressure that always rests at the earth's north and south poles. The Vortex is a counter-clockwise rotation that keeps the coldest air closest to the pole.

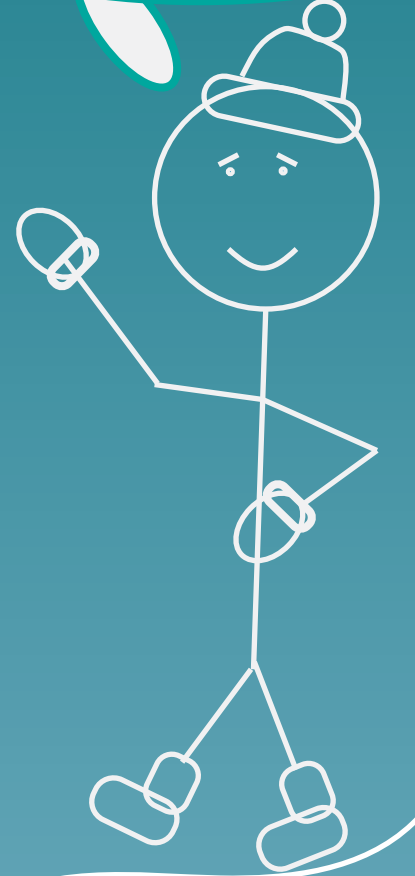


If the jet stream remains strong along its typical route, it will keep the Polar Vortex rotating in place. If the jet stream dips, the rotation wobbles and warm air pushes upwards causing some typically warm regions to receive cold weather and some typically cold areas to receive unseasonably warm weather.

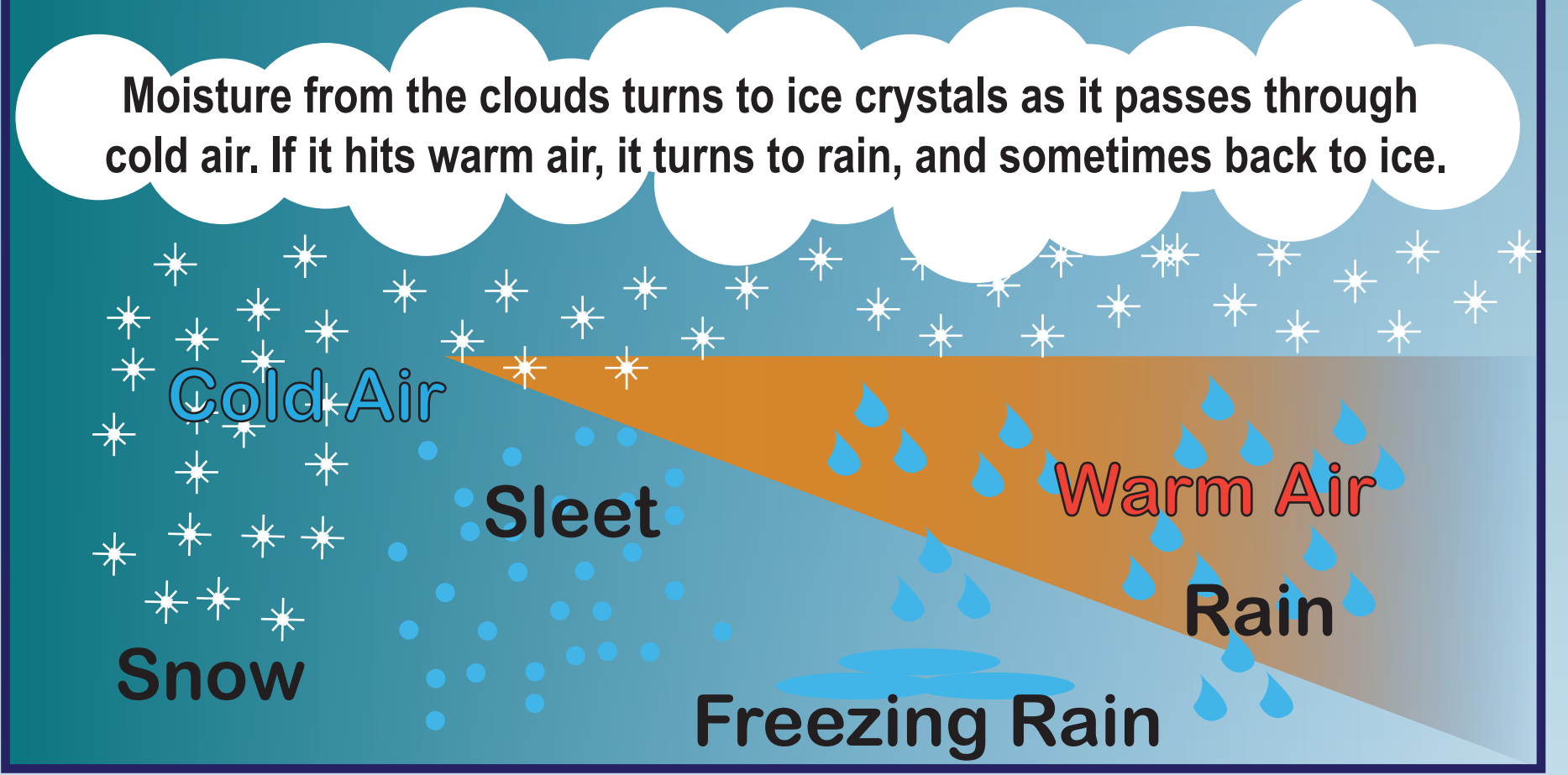
## Life of a Snowflake



Each snowflake takes a different path from the cloud to the ground. The journey shapes the snowflake's design. Warm air stretches the branches!



**Staying Warm**  
In colonial SC, people relied on firewood as an essential part of life from cooking to staying warm to even some jobs. In the country, people cut down trees as needed, but in the city people had to buy wood. Merchants sold firewood by the cord, a stack of wood 8ft long, 4ft high, and 4ft deep, a practice still common today.



**Blizzard Warning!** What does it take to make a blizzard? A mass of warm air rises over a mass of cold air causing strong, cold winds. With freezing temperatures at ground level and an abundance of moisture in the air, the conditions will be just right for a blizzard and a snowball fight!

I should probably check [scemd.org](http://scemd.org) for tips on staying safe in a winter storm!

