

# O D A Z Z R O T



1938 Tornado: East Bay and Market Streets in Charleston, SC  
South Carolina Historical Society

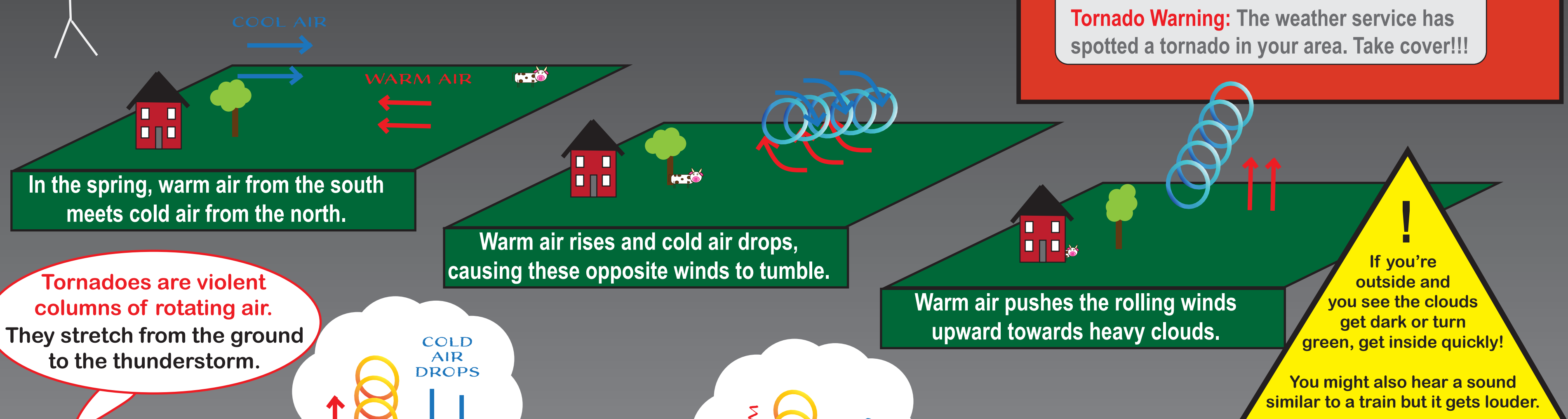


1938 Tornado: City Market in Charleston, SC  
South Carolina Historical Society

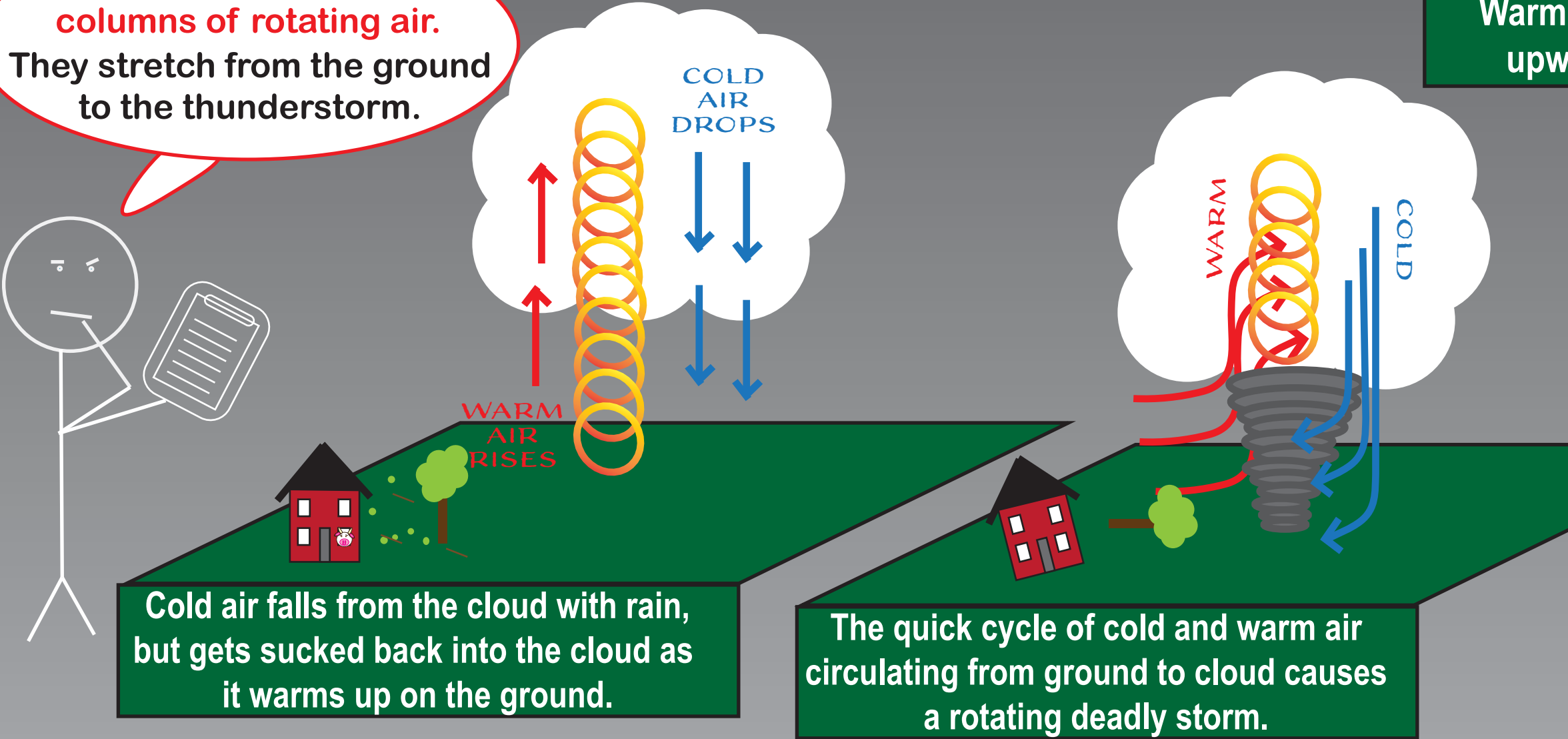


1938 Tornado: East Bay Street in Charleston, SC  
South Carolina Historical Society

**Can tornadoes occur in South Carolina?**  
**I thought that was a Midwest thing!**



**Tornadoes are violent columns of rotating air.** They stretch from the ground to the thunderstorm.



Fujita Scale	
F0	40-72 mph winds
F1	73-112 mph winds
F2	113-157 mph winds
F3	158-206 mph winds
F4	207-260 mph winds
F5	261-318 mph winds

**The Fujita Scale measures the wind speed of tornadoes.** All tornadoes are dangerous. Always seek shelter.

**Tornadoes are complex.** Scientists do not fully understand them and they are extremely dangerous to study. Tornadoes can drive a drinking straw through a tree trunk or leave papers untouched on a table in a destroyed house. No one knows how.

**As soon as you hear the warning siren or see it on TV, get to a basement, interior room, or a closet.**

**South Carolina averages 11 tornadoes per year since 1950.**  
- 18th in US for # per sq. mile  
- 26th in US for # of tornadoes

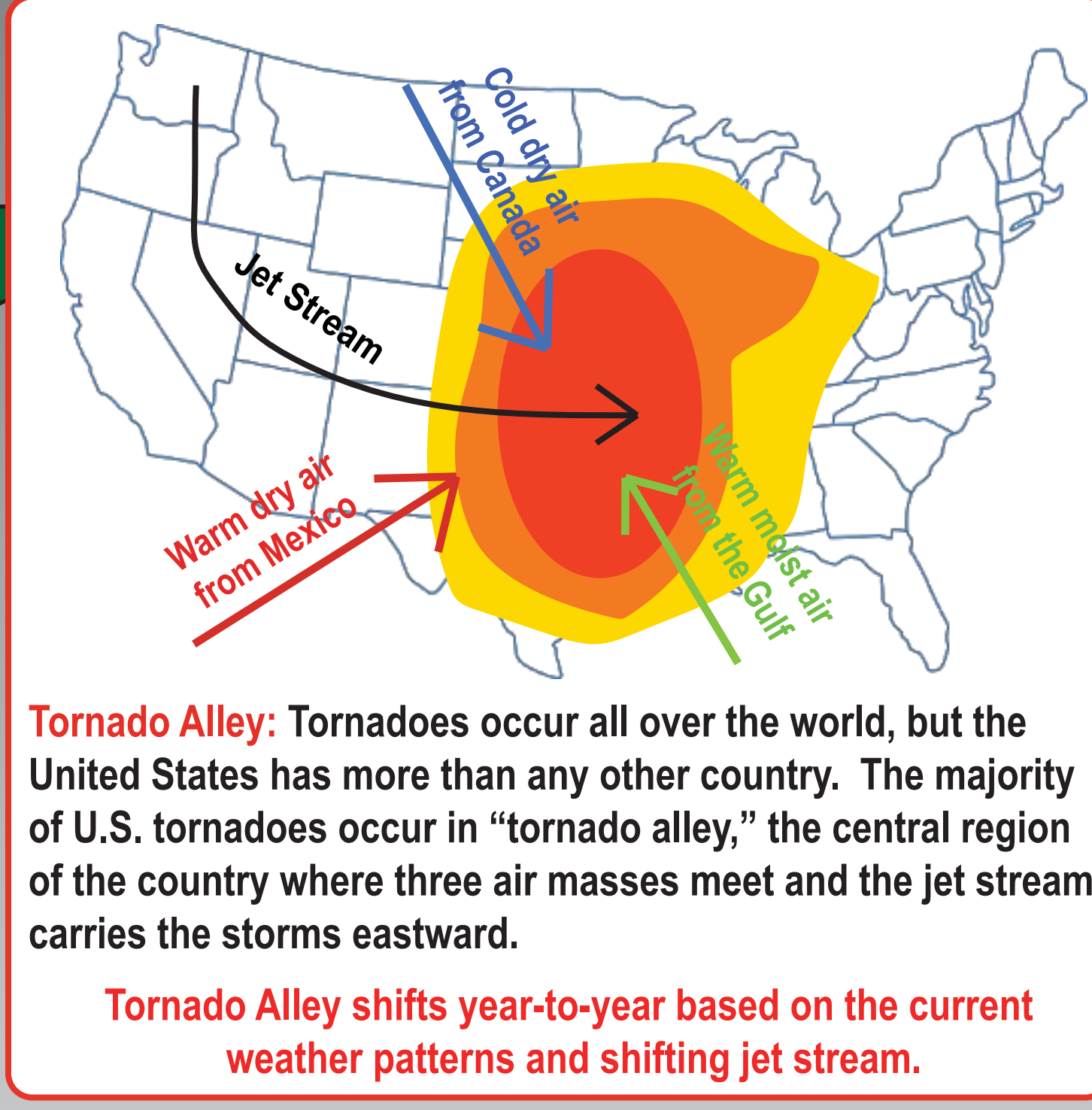
Visit [scemd.org](http://scemd.org) to figure out your tornado plan

**Watch the sky for dark clouds. Turn on the TV, radio, or check your phone for weather updates:**

**Thunderstorm Warning:** Severe storms with lightning and hail can quickly turn into tornadoes. Stay indoors and watch the news.

**Tornado Watch:** The conditions are right for a tornado to form. Keep an eye on the news.

**Tornado Warning:** The weather service has spotted a tornado in your area. Take cover!!!



## TORNADO VS. HURRICANE

